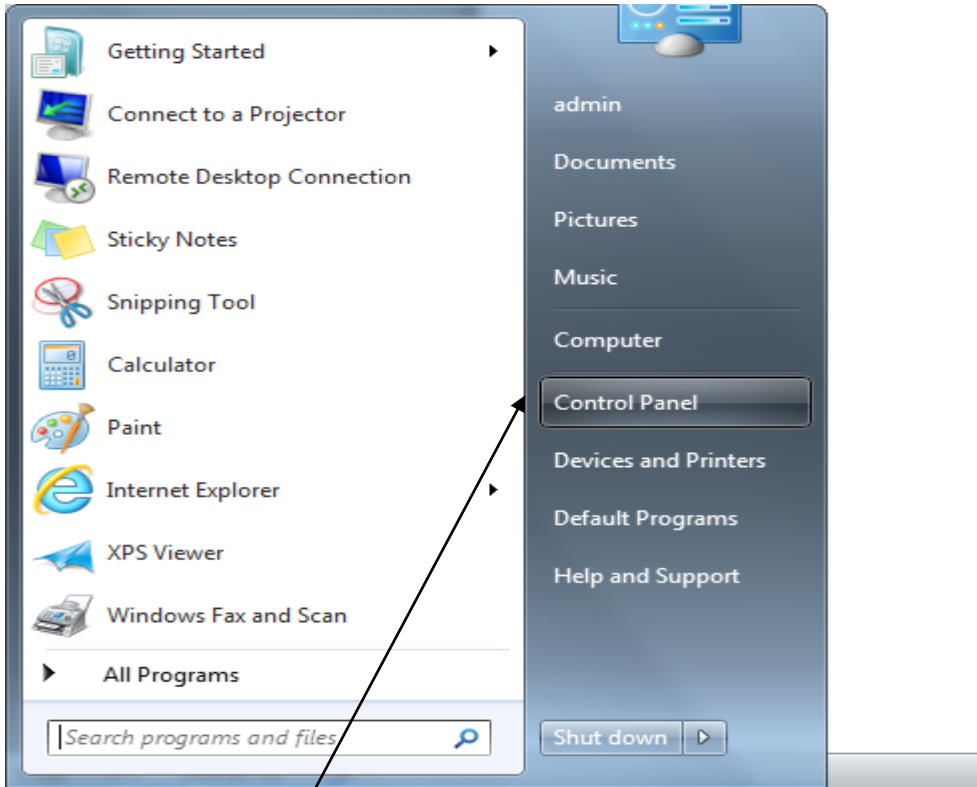
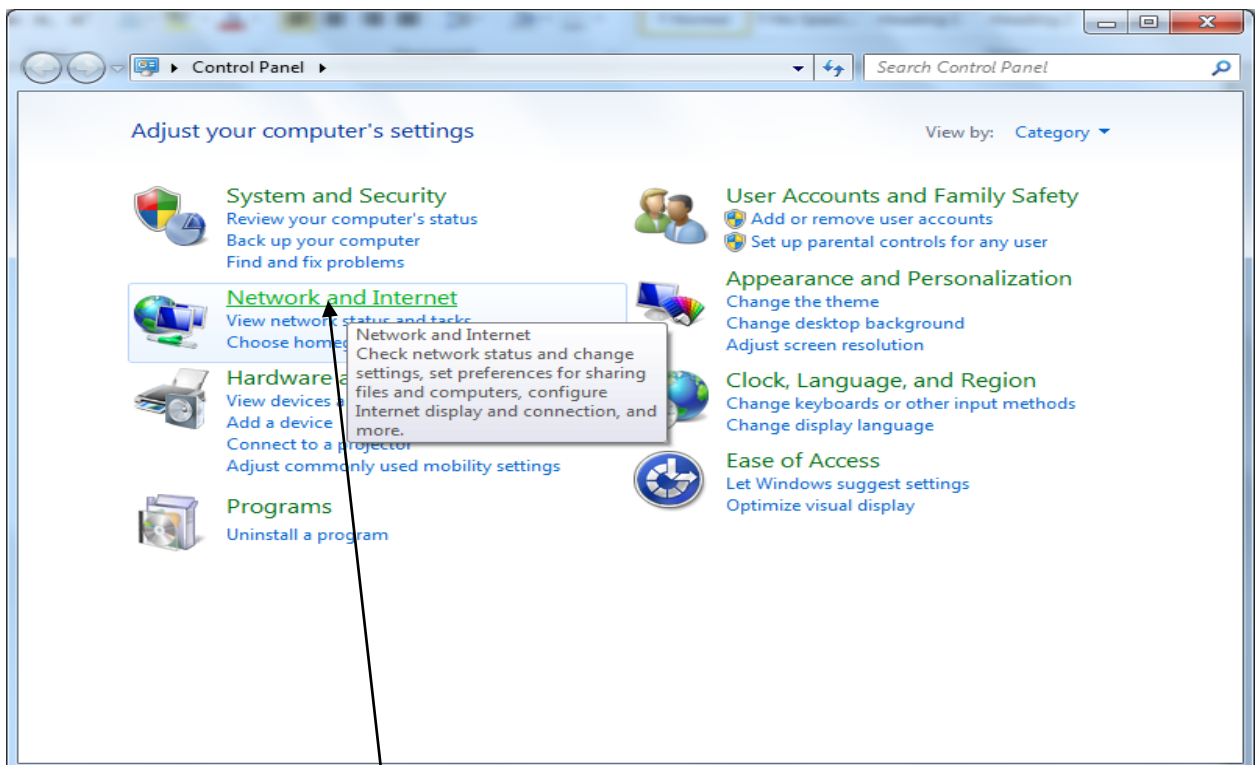


## eduroam connect with Window 7

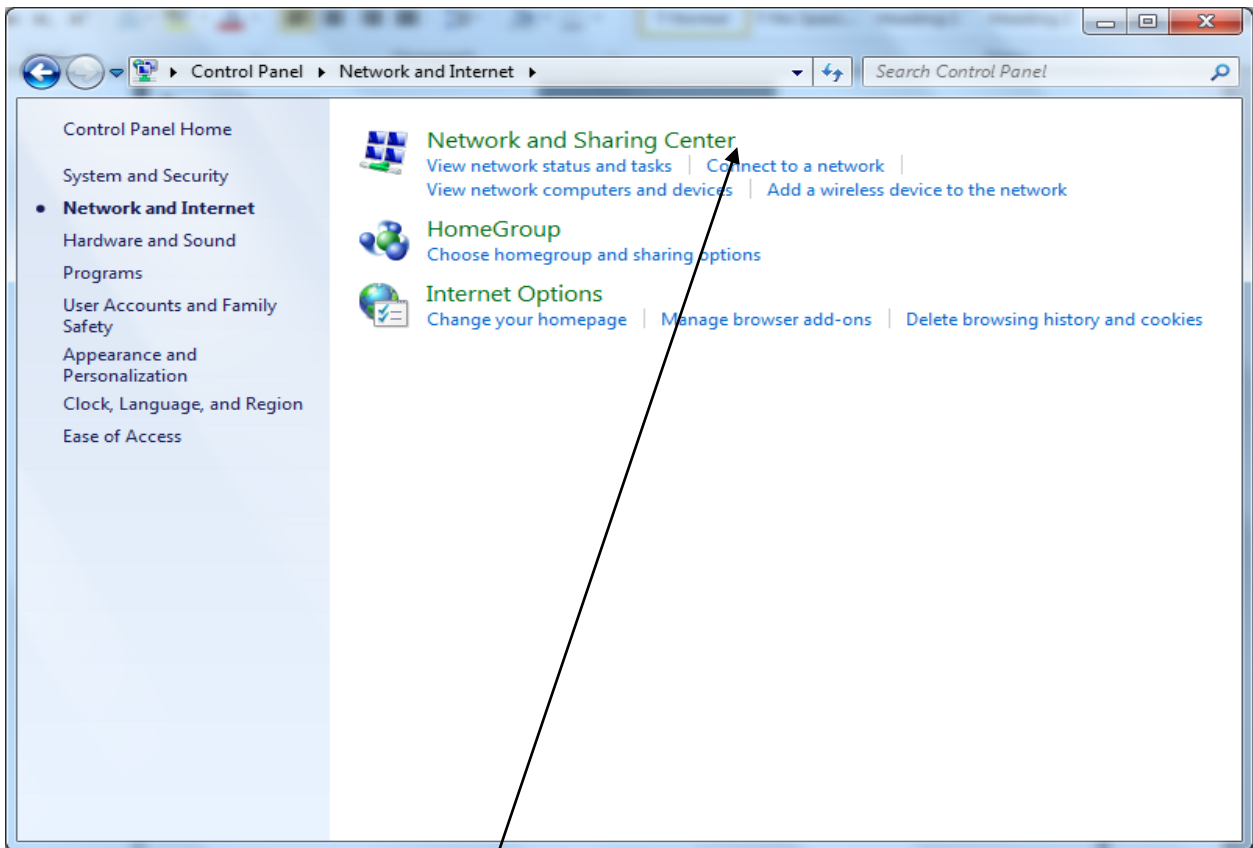
Follow instruction and select as shown



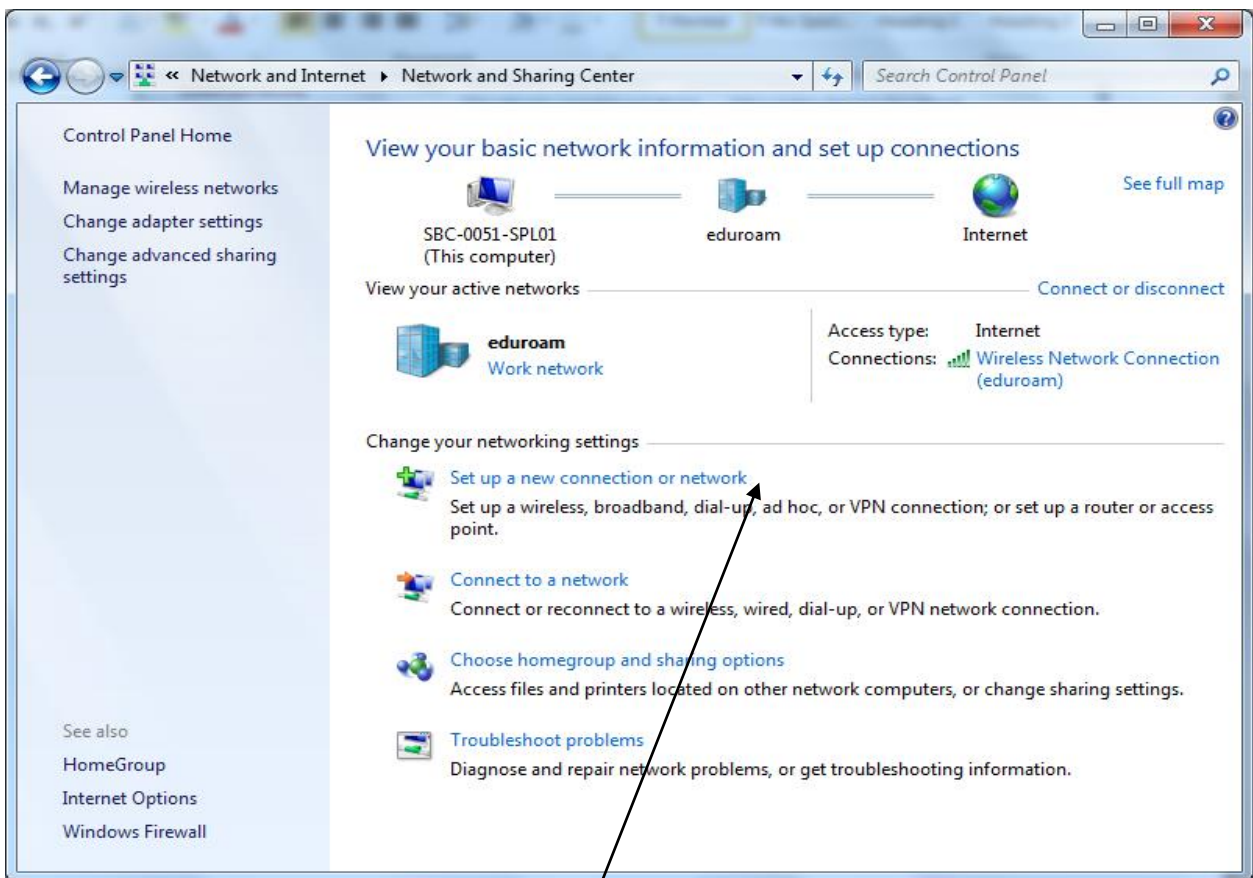
Select Control Panel



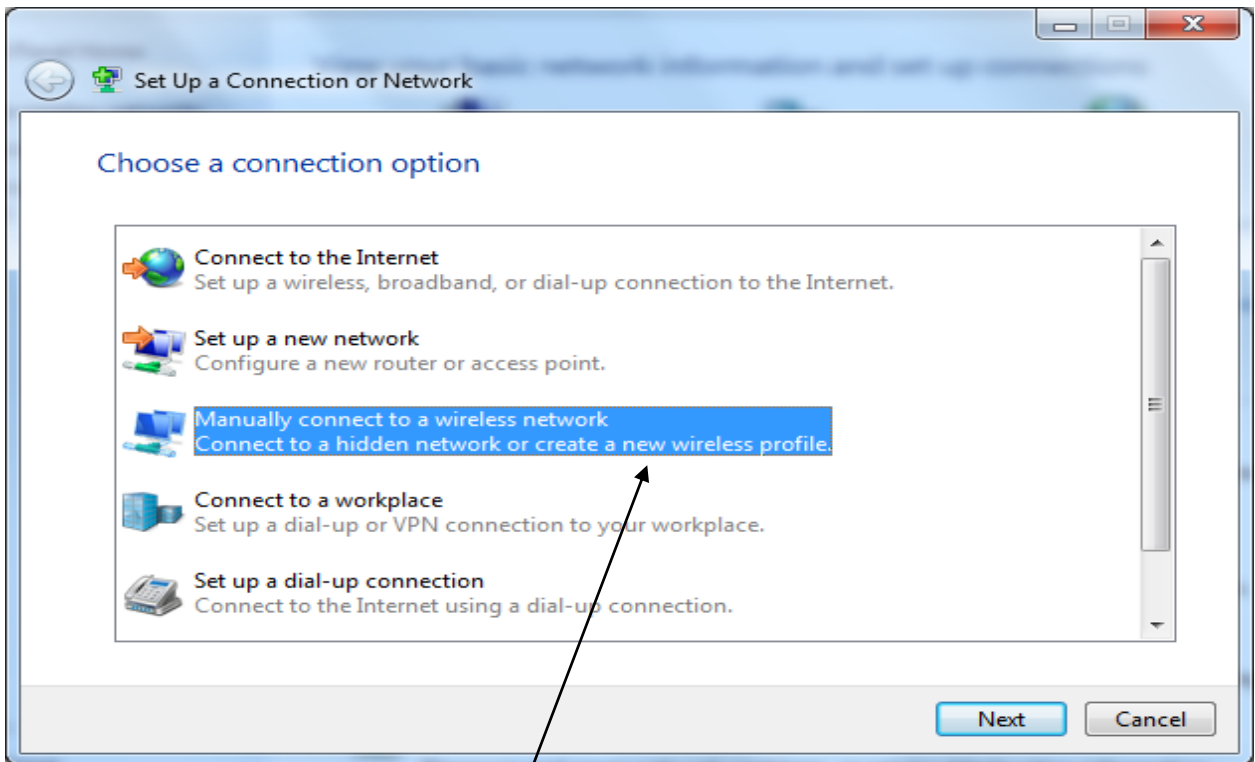
Select Network and Internet



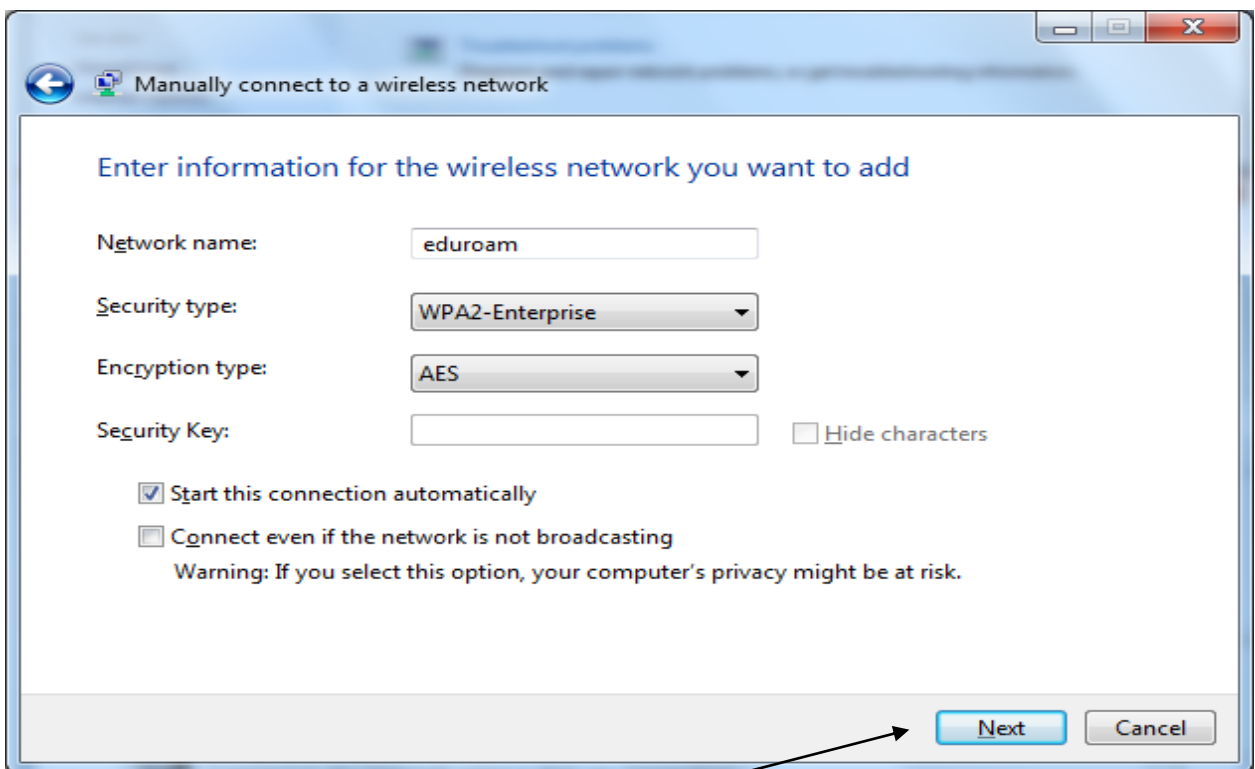
Select Network and Shared Center



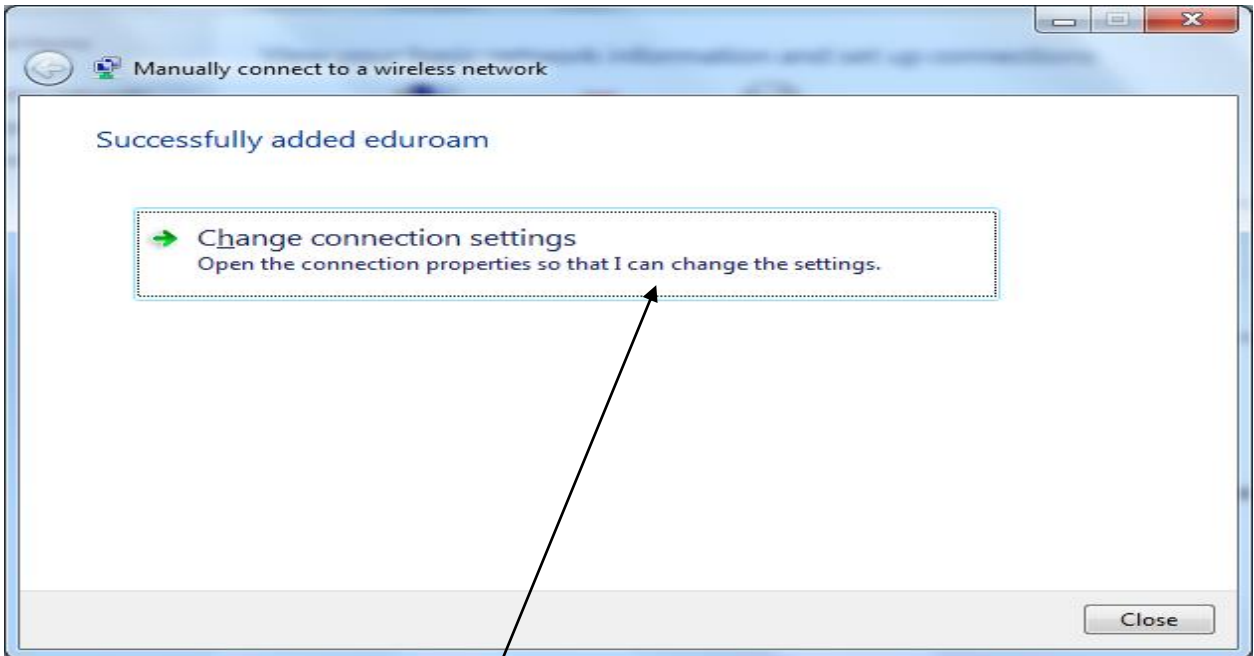
Select set up a new connection or network



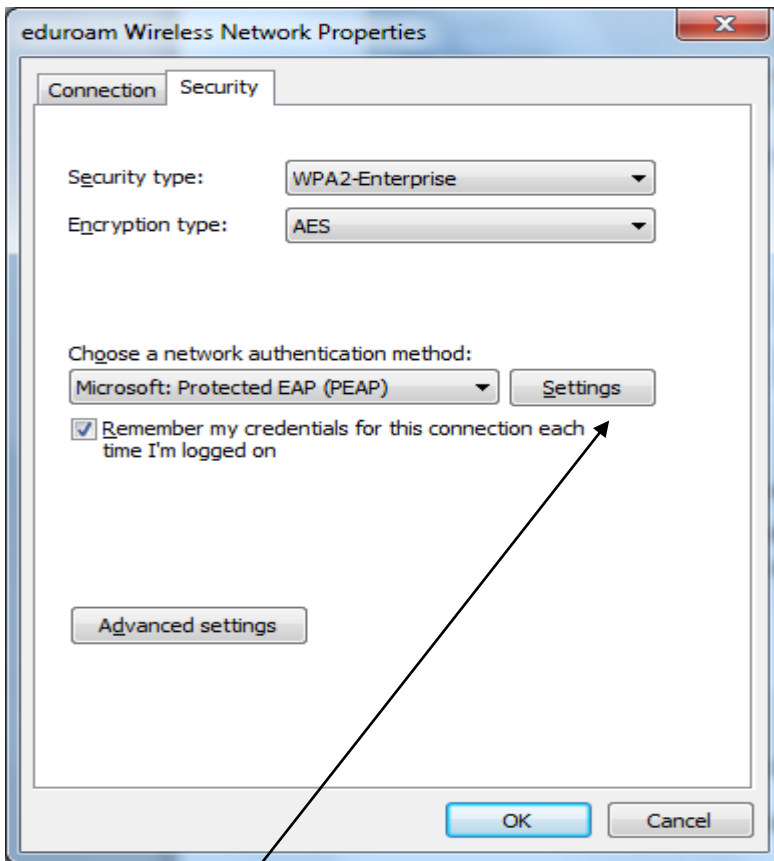
Select Manually connect to a network



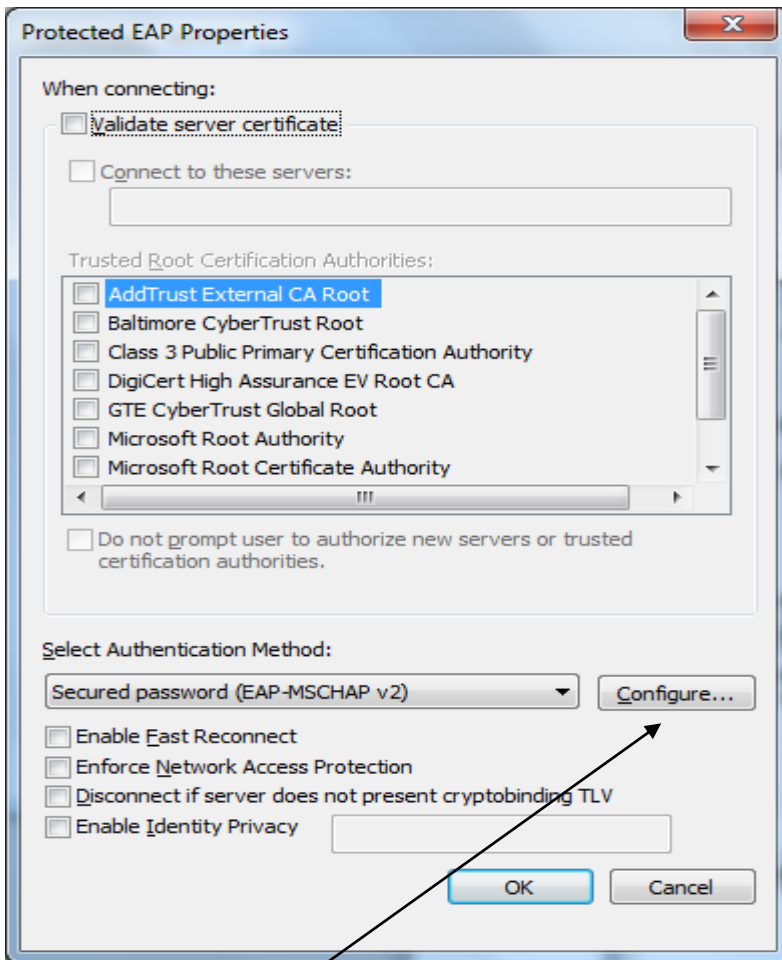
Enter details as shown and select Next



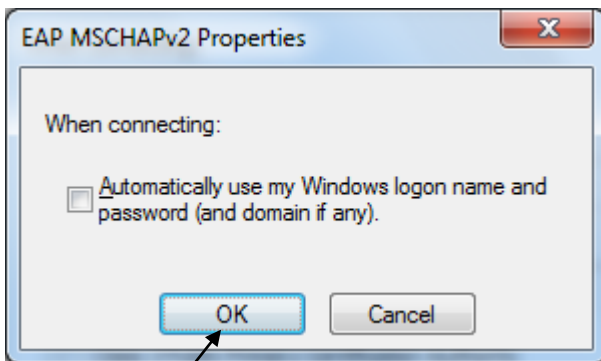
Select Change connection settings



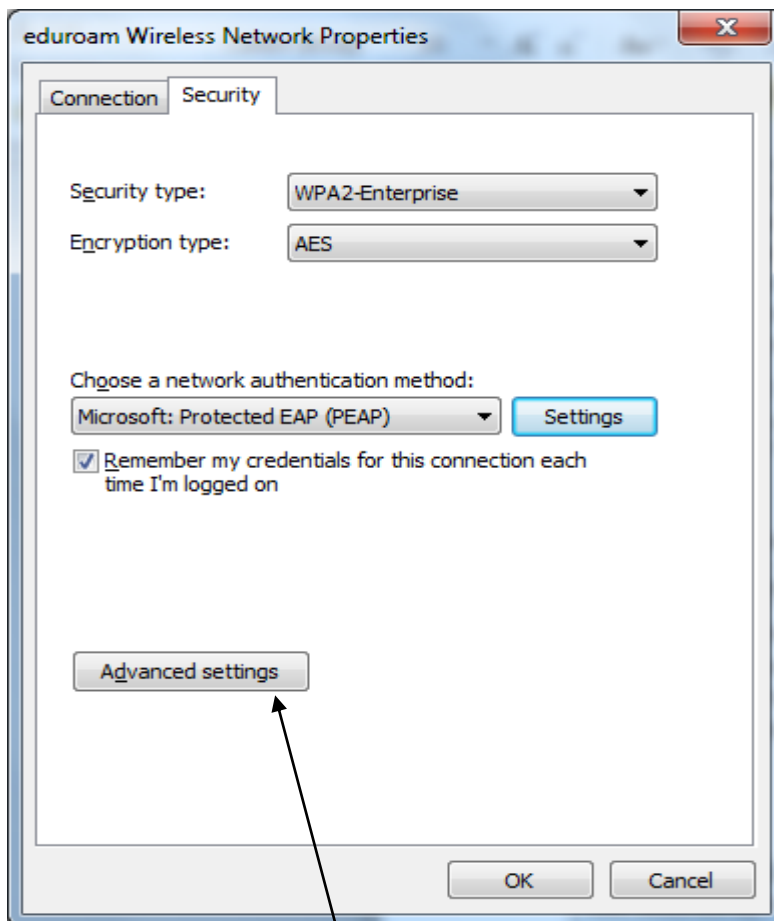
Select Settings



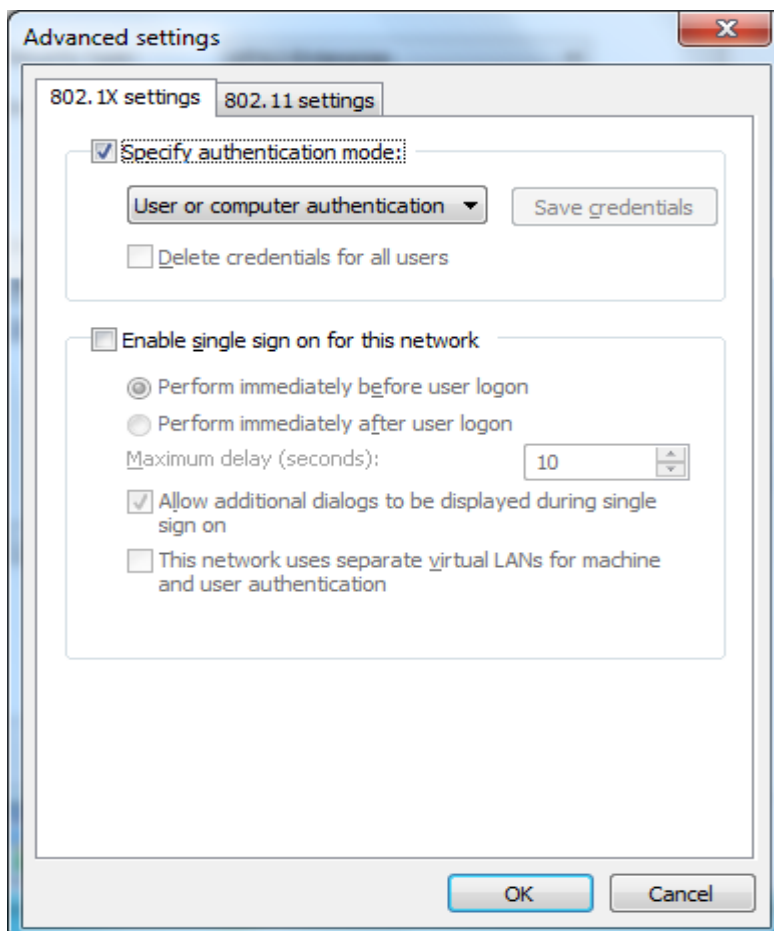
Select Configure



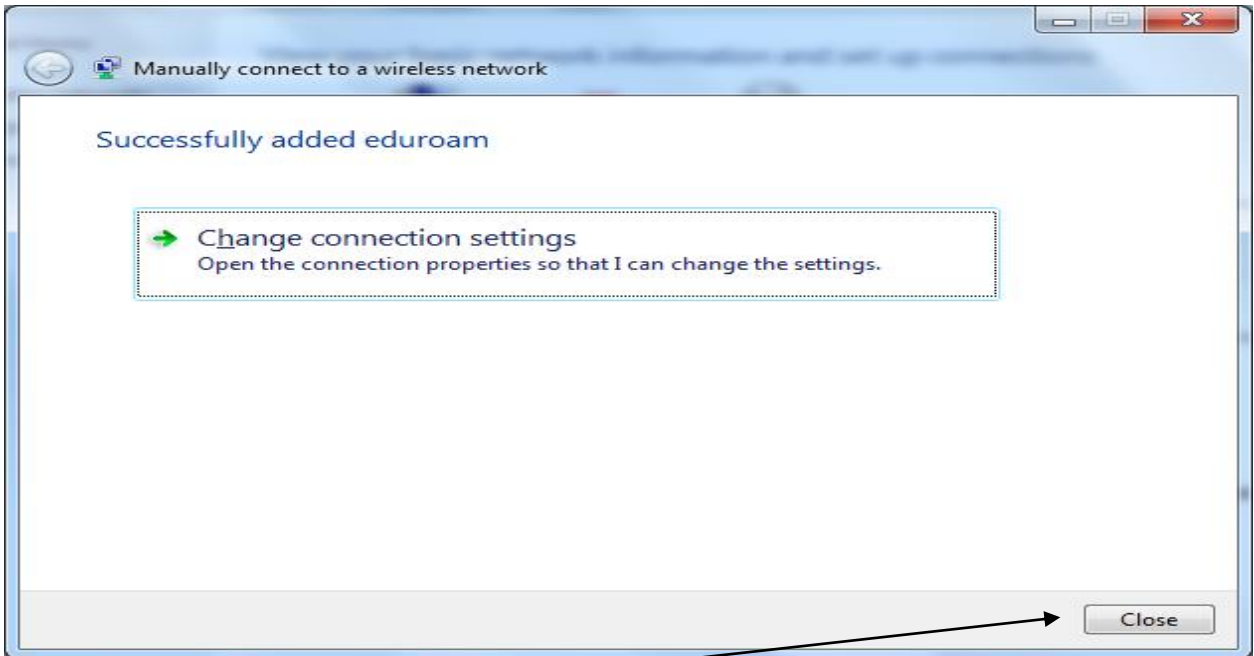
Select OK



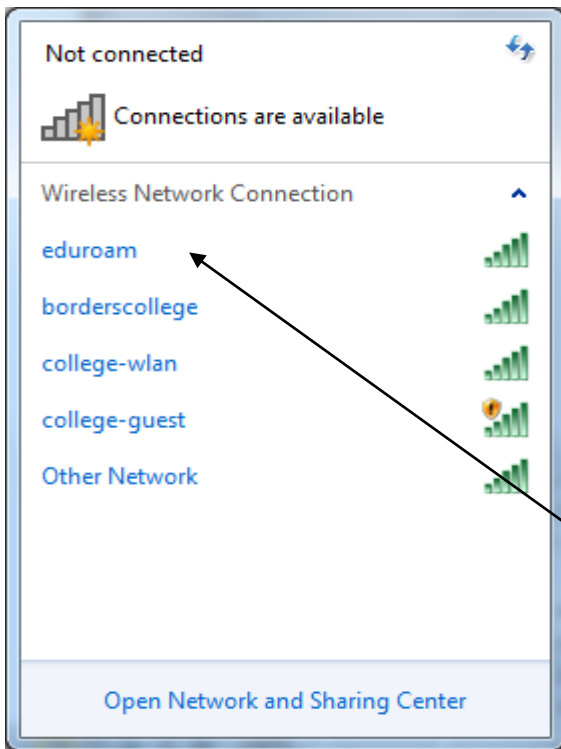
Select Advanced settings



Select OK, OK

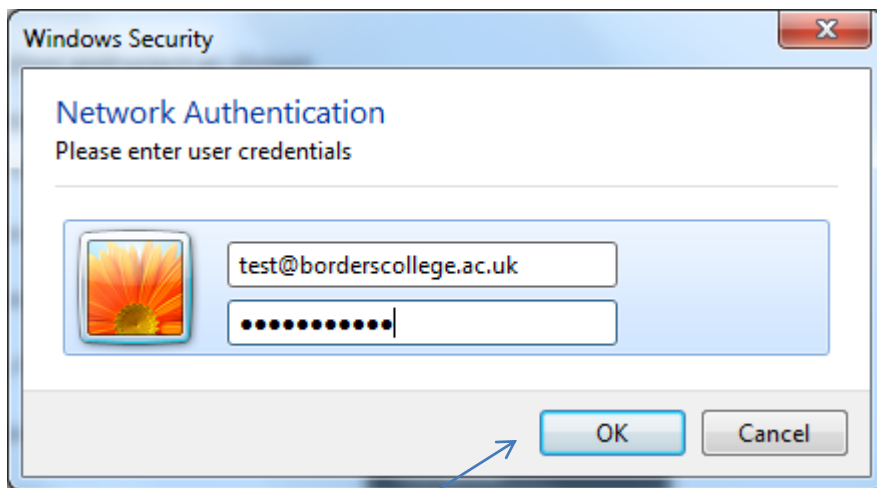


Select Close



Open WiFi from task bar.

Click mouse on eduroam and Select Connect



Replace test and password with your login details and select OK  
Users from different institutes have to use their home domain,  
ie a Heriot Watt user would use @hw.ac.uk



There should now be a connection to eduroam

You will now be able to open an Internet Browser

**Note** A Proxy setting for the Internet is not required



